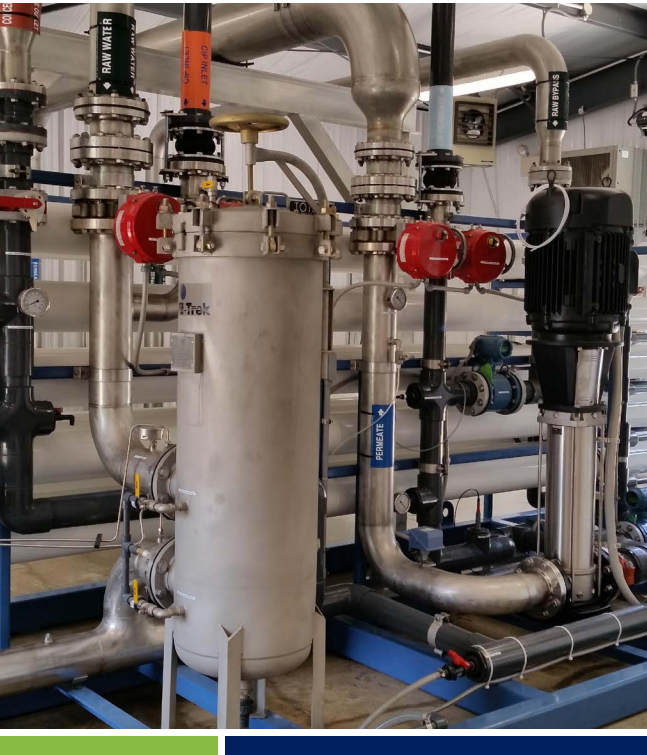


TONKA WATER, A U.S. WATER BRAND PROJECT PROFILE



COMMUNITY OF STEWARTVILLE, AL Groundwater Treatment Plant

Project

The community of Stewartville was in need of a water treatment solution. Tonka Water, a U.S. Water Brand was selected as the equipment manufacturer for a new water treatment plant. The chosen process for softening is a complete integrated system consisting of membrane softening, with controls by Tonka Water. The new system includes a Flux™ RO membrane system consisting of an 8x4 membrane skid array that is expandable to 10x5 and a Clean In Place (CIP) skid, resulting in a full system flow rate of 460 gpm. The expandable skid allows for flexibility with future plant expansion.

Process

The customized softening system utilizes the high pressure from the well pump to move water through the membranes, then on to distribution without the need for an additional feed pump. Where the feed pump would traditionally be located, a high service pump is used to increase permeate pressure to distribution. Raw water is directed into two streams: one stream utilized for blending, bypasses the Flux RO/NF™ membrane system, and the second stream feeds into the Flux RO/NF™ system for hardness reduction. The membrane bypass stream is then blended back with the more corrosive membrane effluent stream to form stable product water for consumption. A membrane bypass stream is often used to stabilize membrane permeate to protect the distribution system from aggressive water.

APPLICATION

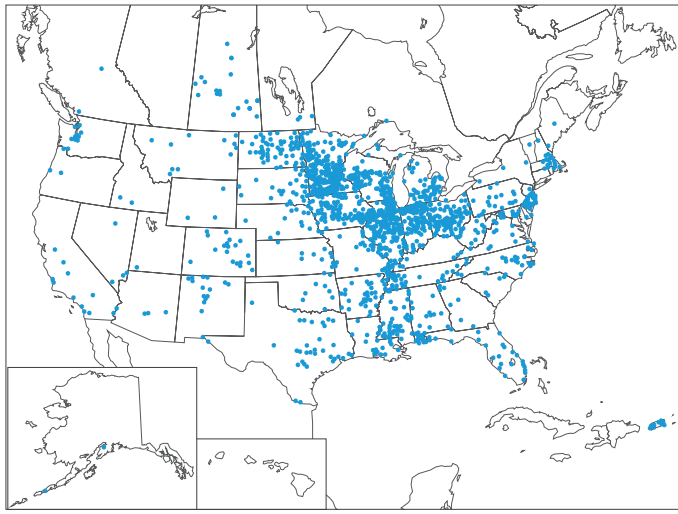
Softening

TREATMENT SYSTEM

Flux™ RO/NF membranes

FEATURES

- State-of-the-art technology
- Cost efficient
- Superior fouling and chemical resistance



Tonka Water Brand Guarantee

Tonka Water, a U.S. Brand provides the best custom manufactured water treatment systems in the industry. Our people will deliver excellent service and support for your project from conceptual and cost-effective design, to construction and commissioning; and throughout the system warranty and operational life of the project.

Thousands of quality water treatment installations since 1956.

Performance

The Stewartville water treatment plant commissioned in 2014, continues to produce excellent results and meet expectations. Tonka Water is proud to have assisted the community in achieving its treatment goals.

	Influent Water	Blended Water
pH	6.0 - 7.5	7.11
TDS	291 mg/l	195 mg/l
Hardness	453 mg/l	100 mg/l



763.559.2837
 www.tonkawater.com
 Tonka Water, a U.S. Water Brand

 **U.S. WATER**
 The future of water™